

N 4690 U362.7: Lak/Weber/1964

dup
10/14

11
18
10
12

LAKES OF THE HIGH UINTAS

WEBER, PROVO AND DUCHESNE RIVER DRAINAGES

By

FREDERIC VINCENT

JON L. GATES

ALBERT F. REGENTHAL

UTAH STATE DIVISION OF FISH AND GAME

John E. Phelps, Director

Publication No. 63-4

Revision No. 1

A Publication of the
UTAH STATE DIVISION OF FISH AND GAME

© 1964 Utah State Division of Fish and Game
1596 West North Temple
Salt Lake City, Utah

INTRODUCTION

The Uinta Mountains of northeastern Utah are unique in that they are the only major range of mountains in North America to lie in an east and west direction. King's Peak, Utah tallest point of land, standing over 13,498 feet is hard to distinguish from its sister peaks, all of which stand over 12,000 feet. This is in a country of snow-capped mountains, of green meadows, blue lakes and tall trees. Four of Utah's major rivers, the Duchesne, Provo, Weber and Bear, originate in the snowfields of these mountains.

Although a number of mountain lakes and basins have been investigated over the years, the first comprehensive lake study undertaken by the Utah Department of Fish and Game began in the summer of 1955. The information that was gathered over the years may have changed somewhat by now. Each lake's physical and biological features are always changing from year to year, and so our findings must also change. This results in a changing management policy. This policy is simply to stock the right kind and number of trout in the proper lake so that the net result is a large healthy trout in the sportsman's creel.

The old means of utilizing pack animals for stocking these mountain lakes meant that only a few lakes could be planted each year. Since 1955, planes have been utilized for planting these remote lakes. Hundreds of lakes are now stocked each year with Eastern brook, cutthroat and rainbow trout. The more inaccessible lakes are stocked on three and four year cycles. The more heavily fished lakes are planted on one and two year cycles. Care is taken not to overstock these lakes because it usually results in small, poorly developed trout.

The trout that are stocked by plane are less than three inches in length. These fish are used to replenish the present populations in some lakes, while other lakes that our surveys have found to be favorable for planting are stocked for the first time. Because the growing season for the small trout is very short, June through August, growth is frequently quite slow. In most areas by the trout's third year he has reached 8 to 12 inches. The Eastern brook and cutthroat trout are the predominant species stocked. There are several reasons for this — brook and cutthroat have demonstrated an ability to grow and survive better in many mountain lakes, particularly where competition exists between species, and also because most of the lowland waters are managed primarily for a rainbow and brown trout fishery.

The use of brook and cutthroat in the mountain lakes where they seem to do well, provides variety in the angler's creel. Brook trout are also used in a number of lakes because of their ability to reproduce in spring and seep

areas where tributaries are not present. The Arctic grayling can also be found in many Uinta lakes. This fine fish not only provides tremendous fly fishing, but its beauties are surpassed by none.

As most of our Uinta Mountain lakes lie in remote basins far from the nearest road, it is recommended that trips be well planned and adequate preparations made beforehand. Most of these lakes can be reached over well-marked U.S. Forest Service trails. Ordinarily, trips up to five miles can be made by foot when the fisherman plans to spend only one day on the lake before returning home that evening. However, back-packers who wish to stay overnight can easily reach farther lakes. Horses and pack animals are advisable for longer stays. Names of packers may be obtained from conservation officers or forest rangers. Reservations should be made well in advance. Because of the extreme altitudes and unpredictable weather, warm clothing and rain gear should always be carried. Snow showers are common all season at higher elevations. Bug repellent for camper and horse is a necessity until mid-August. It is usually after the first week of July before many of the higher lakes become accessible. Fishing may last through September. **No attempt was made to list all the lakes in the Uinta Mountains in this publication.** Only those that were found to contain populations of game fish and those which are under study are included.

Fishing is unpredictable, especially in the High Uintas. If one lake fails to produce, try another, there is usually one nearby. If you are one who likes elbow room to camp and fish, and to discover new scenic wonders, let us recommend the High Uintas.

WEBER RIVER

Some of the most inaccessible lakes in the Uinta Mountains lie in this drainage. Few trails exist and those that do are generally poor. There are 51 lakes and ponds in the Weber River Drainage. Arctic grayling, cutthroat, Eastern brook or rainbow trout are found in 29 of these lakes. Trails from Holiday Park and Smith-Morehouse Reservoir, on State Highway 213, head south into this country. Some of the most popular trails originate at Trial Lake.

WEBER RIVER DRAINAGE

ABES, X-11. Sits west of Meadow Lake over ridge to Neil Lake then north 1 mile. Poor trail and lake lies in extremely rough timbered country. 21 acres, elevation 9,900 feet, maximum depth 53 feet, average depth 25 feet. Good fishing for cutthroat. Very seldom visited. Some horse feed, campsite on north end of lake. Small dam has been placed across outlet. Stocked with cutthroat.

ADEX, X-15. 3 acres, elevation 10,200 feet, maximum depth 10 feet, average depth 6.6 feet. East of Olsen Lake on right of trail from Anchor Lake. Fishless. Considered for stocking but may only produce marginal fishing.



ANCHOR RESERVOIR, X-10. A

natural lake with water level enlarged by placement of a dam. 7 miles on Middle Fork trail from Trial Lake past Jerry Lake. Sits in rough-rocky country and is hard to find. Here is one for rugged boys. Excellent fishing for Eastern brook and cutthroat trout. 21 acres, elevation 10,400 feet, maximum depth 69 feet, average depth 38 feet. Water level fluctuates 15 feet. Poor campsites and no horsefeed near lake.

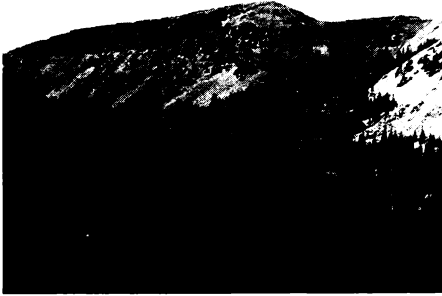
BENCH, X-18. Third lake at the head of Weber River. Reached via Clegg Lake over summit or east of Ibantik around ridge or 9 miles south of Holiday Park on fair trail. 10 acres, elevation 10,000 feet, maximum depth 11 feet, average depth 5.4 feet. Stocked. Occasional winter kill.

CUBERANT I, X-23. On Kamas Lake trail over summit north two miles. 5 acres, elevation 9,800 feet, maximum depth 18 feet, average depth 12.4 feet. Good catches of Eastern brook. Stocked with brook. No campsites or horse feed near lake.

CUBERANT II, X-24. 5 acres, elevation 9,800 feet, maximum depth 6 feet, average depth 3.8 feet. Contains large

Eastern brook. Fish up to 16½ inches taken in July and August. Lake lies ¼ mile west of Cuberant I. Few camping sites.

CUBERANT III, X-25. 5 acres, elevation 9,800 feet, maximum depth 24 feet, average depth 14.3 feet. Limit catches of Eastern brook ranging from 6½ to 12½ inches being taken. Stocked. Lake surrounded by thick stands of conifers.



CUBERANT IV, X-26. 44 acres, maximum depth 25 feet, mean depth 12 feet, elevation 9,800 feet. ½ mile north of Cuberant I. A beautiful mountain lake 2000 yards long offering good fishing for brook and cutthroat trout. Good campsite on north end, some horse feed.

CUBERANT V, X-35. 5 acres, elevation 9,800 feet, 300 x 250 yards, maximum depth 15 feet, average depth 6 feet. A cold, clear lake, mostly heavily timbered, and characteristic of the other lakes of the basin. Cutthroat and brook trout present. Reached by foot ½ mile northwest of Cuberant IV.

DEAN, X-16. From highway 150 at summit west past Clegg Lake ½ mile over summit. One of the group of lakes lying at the headwaters of the Weber River. A beautiful lake, surrounded by trees in scenic country. Good fishing for brook and cutthroat

to 16½ inches. Lake is known to winter kill. Stocked with Eastern brook. Some natural reproduction. Good camping sites and some horse feed. 18 acres, maximum depth 16 feet, average depth 8.3 feet, elevation 10,200 feet. Also accessible via old logging road off Highway #150.

DIVIDE NO. 2, X-1. 4.0 acres, elevation 10,500 feet, average depth 6.0 feet, maximum depth 11 feet. 2 miles northwest of Trial Lake on good trail past Cliff, Watson and Clyde Lakes. Sits over summit from Divide No. 1. Lake is subjected to winter kill and is reported to contain no fish. Has not been restocked. Camping places.

ERICKSON NO. 1, X-6. An open lake sitting in rocky country. 5 miles on poor trail from Trial to Big Elk, then 1 mile northwest over ridge. 16.0 acres, elevation 9,500 feet, maximum depth 12 feet, average depth 6.5 feet. Eastern brook and cutthroat to 12½ inches. Stocked. Some horse feed.



ERICKSON NO. 2, X-7. Also known as Waterdog. 18 acres, elevation 9,500 feet, maximum depth 14 feet, average depth 6.2 feet. Excellent fishing for Eastern brook to 14½ inches from late June to August. Horse feed and good campsites. 5 miles on poor trail from Trial Lake to Big Elk, then over ridge past Erickson No. 1, ¼ mile. Lake is stocked with brook trout. Record of

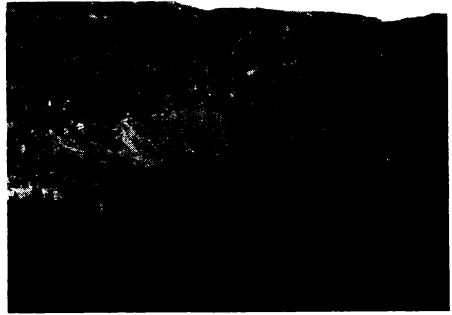
winter kill. Some open areas on these two lakes for fly fishing.



FISH RESERVOIR, X-27. 72 acres, elevation 10,300 feet, maximum depth 42 feet. Water level fluctuates 16 feet. 7 miles on rough trail from Holiday Park. Timbered lake with a 16-foot dam across outlet containing grayling, brook and cutthroat. Good catches up to 16½ inches of all species have been made in recent years. Brook and cutthroat stocked. Good campsites with some horse feed in the area.

IBANTIK RESERVOIR, X-5. Maximum depth 34 feet, average depth 25 feet. Elevation 10,400 feet, 16 acres. Eastern brook to 12½ inches, some cutthroat reported. Total trail distance from Trial Lake, 2½ miles. Good fishing in late summer. Stocked with brook. Some campsites, no shelters, little horse feed.

JERRY, X-9. 5 acres, 4 miles from Trial. Cross summit at Long Lake on poor trail, Jerry is first lake. Maximum depth 16 feet, average depth 6.6 feet, elevation 10,300 feet. Lies in grassy meadow next to rocky ridge. 170 yards long. Eastern brook to 12½ inches. Lake occasionally winter kills. Only fair fishing. Good campsite and horse feed.

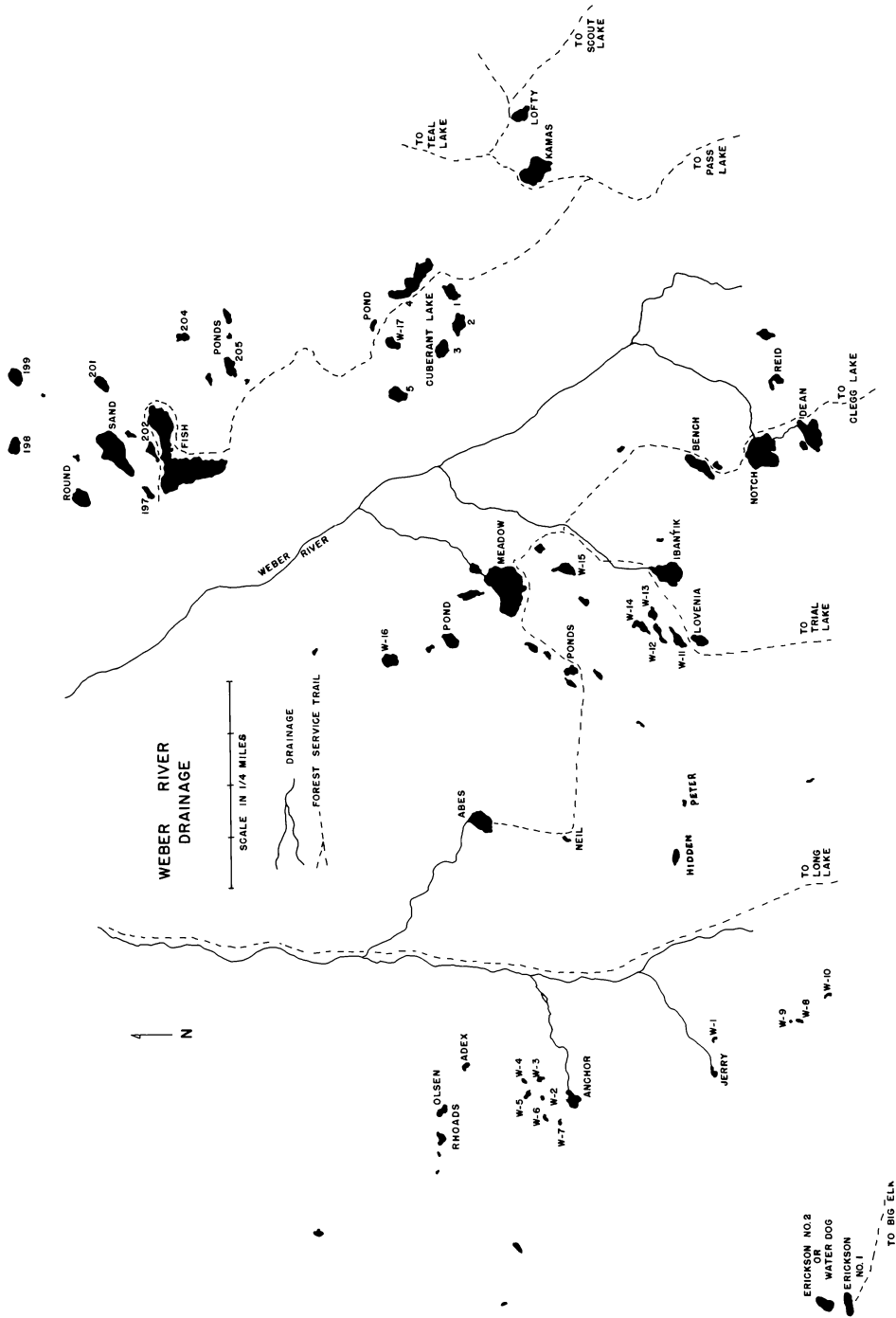


KAMAS, X-21. 3 miles on Weber River Trail from Pass Lake, lies northwest over summit from Scout Lake. Precipitous cliffs around most of shore, but very beautiful country. Contains brook, rainbow and cutthroat trout to 12½ inches. Restocked annually with cutthroat. 25 acres, maximum depth 41 feet, average depth 19 feet, elevation 10,500 feet. A small dam has been built across outlet.

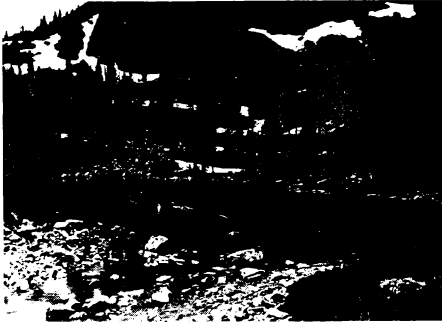


LITTLE HIDDEN, X-2. Past Watson and Clyde Lakes, then over summit at Divide Lakes on good trail. 10 acres. Elevation 10,300 feet. Average depth 10.3 feet, maximum depth 28 feet. Contains cutthroat and brook trout from 8½ to 16½ inches. Little horse feed. Few campsites. Excellent fishing. Stocked.

LOFTY, X-22. On summit northwest of Scout Lake 1 mile. 7 acres, elevation 10,800 feet, maximum depth 25 feet, average depth 11½ feet. A deep, clear mountain lake, open around the shores, in which the trout are excep-



tionally wary. Contains Eastern brook, cutthroat and a few rainbow. Fish 10½ inches common throughout the summer. No camping sites or horse feed. Lake stocked with cutthroat trout.



LOVENIA, X-4. 2 miles on trail north over summit from Trial Lake. An open lake in timberline country, containing Eastern brook up to 12½ inches. Some natural reproduction. Inlet has small brooks. Camping places and horse feed. 3 acres, elevation 10,000 feet, maximum depth 11 feet, average depth 8.5 feet, excellent fly fishing. Brook and cutthroat present. Stocked with brook trout.

MEADOW RESERVOIR, X-8. An artificial lake with a dam. Maximum depth 46 feet, average depth 27 feet, elevation 9,800 feet, 34 acres. Good trail to Ibantik Lake then 1 mile north on poor trail past several small potholes. Lake sits in heavy timber and is hard to find. Fair fishing for cutthroat trout to 14½ inches. Good campsites. Only marginal horse feed. Fishing better later in season. Stocked. Also known as Seymour Lake. Water level fluctuates 15 feet.

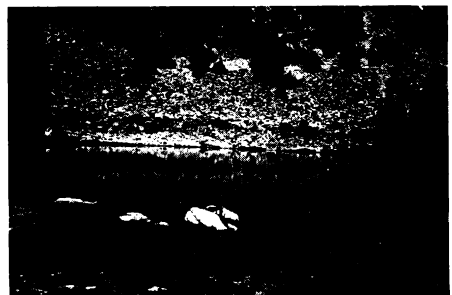
NEIL, X-12. West of Meadow Lake 2 miles in rough-timbered country on poorly marked trail. 3 acres, maximum depth 17 feet, average depth 10 feet,

elevation 10,500 feet. Brook and cutthroat to 12½ inches. Good fly fishing. East shore lies next to high rocky slide. No campsites or horse feed. Stocked with brook trout.



NOTCH RESERVOIR, X-17. On trail past Clegg and Dean Lakes 1 mile over summit. 25 acres, elevation 10,200 feet, maximum depth 47 feet, average depth 17.2 feet. Natural lake that has been enlarged by a dam. A deep, clear lake intensely blue in color, mostly open around the shore, exceptional scenic beauty. Excellent fly and spin fishing for brook and cutthroat to 17 inches. Some reproduction, stocked.

OLSEN, X-13. 13 acres, elevation 10,100 feet, maximum depth 13 feet, average depth 6 feet. North of Anchor Lake 1 long rough mile on poor trail, or just east of Rhodes. A pretty mountain lake sitting in open country. Stocked with Eastern brook. Good campsites and horse feed.

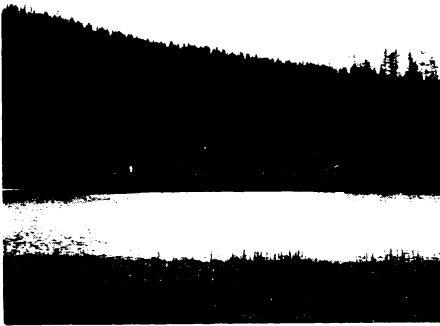


PETER, X-3. 3 acres, elevation 10,500

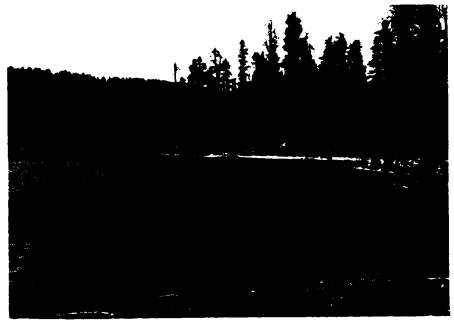
feet, average depth 8.8 feet, maximum depth 13 feet. Take trail from Trial Lake to Clyde, Divide and Hidden Lakes. Lies east of Little Hidden Lake ½ mile. Stocked with brook, record of winter kill. Marginal fishing.

REIDS, X-19. 3 acres, elevation 10,300 feet, maximum depth 8 feet, average depth 4 feet. Past Clegg Lake ¼ mile over summit by Dean Lake. No fish.

RHODES, X-14. 11 acres, elevation 10,100 feet, maximum depth 33 feet, average depth 14.3 feet. North and west of Anchor Lake near Olsen on poor trail. This lake is also accessible via the Holiday Park logging road, the lake being about a mile from the road. Eastern brook to 12½ inches, excellent fly fishing throughout the summer. Good campsites and horse feed. Stocked with brook trout.



ROUND, X-28. 8 acres, elevation 10,000 feet. Maximum depth 36 feet, average depth 15 feet. From Holiday Park 5 long, rough miles southeast over unmarked trail. Scenic terrain, good campsites, running water, lots of bugs and some horse feed in the area. Fast fishing for grayling. Natural reproduction. Some brook and cutthroat trout. Shoreline for fly fishing.



SAND RESERVOIR, X-29. 22 acres, maximum depth 50 feet, average depth 17 feet, water level fluctuates 10 feet. Elevation 10,200 feet. Lies in rough, timbered terrain between Round and Fish lakes. Campsites and horse feed in the area, but not near the lake. Good population of grayling. Some brook and cutthroat trout. Good fishing for fish to 15 inches.



199, X-32. 4 acres, elevation 10,100 feet, maximum depth 25 feet, average depth 14 feet. ½ mile northeast of Sand. No trail, very rough terrain, hard to locate. Poor campsites with little horse feed. No running water. Heavy timber. Stocked with brook trout.

204, X-38. 3 acres, elevation 10,500 feet, maximum depth 6 feet, average depth 3 feet. ½ mile southeast of Fish. Rough terrain, no trails but good campsites with horse feed. Excellent fly fishing for both brook and cutthroat trout. Stocked periodically with Eastern brook.

PROVO RIVER

The lakes of this drainage are located north and east of State Highway 150 after leaving Kamas, Utah. Most of the 64 fish producing lakes can easily be reached by trail either on foot or horseback. Of these lakes, 15 can be reached by car. Access to much of this back-country is via the Trial Lake Lodge. The lakes close to the roads are heavily fished throughout the season, but many of the more remote lakes produce nice Eastern brook, cutthroat and rainbow trout. A few lakes also contain Arctic grayling. Trial Lake is located 26 miles east from Kamas, Utah, ¼ mile off State Highway 150.

PROVO RIVER DRAINAGE

ALEXANDER, A-1. 23 acres, elevation 9,300 feet, maximum depth 26 feet, average depth 15½ feet. 4 miles north on Spring Creek Road. Posted trail for ½ mile southeast. Lying in heavy timber with partly open shores. Contains Eastern brook to 12½ inches. Redside shiners present. Stocked. Better fishing later in season.

AZURE, A-10. 10 acres, elevation 10,000 feet, maximum depth 15 feet, average depth 8 feet. Record of winter kill. Sits in rocky timbered country. Produces good fishing for Eastern brook. Seldom fished. West ½ mile off Spring Creek Road by Haystack No. 1 Lake. Too rocky for good campsites. Stocked.



BEAVER, A-20. 1.3 acres, elevation 10,500 feet, maximum depth 6½ feet. On trail to Hidden Lake, 4 miles from

Trial Lake. A beautiful scenic lake sitting in timbered country with open shores. Eastern brook 8 to 12 inches. Stocked with brook trout. Camping sites and raft material available.

BETH, A-6. 6 miles north on Spring Creek Road past Buckeye Lake. 10 acres, elevation 9,700 feet, average depth 4 feet. A pretty lake in open country surrounded by timber. Eastern brook. Stocked. Good fly fishing in late evenings. Camping places.

BIG ELK RESERVOIR, A-18. 30 acres, elevation 8,032 feet, maximum depth 107 feet, 8 miles west of Trial Lake, trail becomes very rough and difficult to follow past Island Lake. Access is also available from Norway Flats 3 miles north on old wagon road then a steep climb to lake. Excellent fishing after July 15 for large cutthroat and Arctic grayling. Lake is seldom visited. Good campsites and some horse feed. Subject to great drawdown.

BLUE, A-5. 16 acres, elevation 9,900 feet, maximum depth 21 feet, average depth 8 feet. Surrounded by heavy timber, Blue Lake sits about ½ mile past Buckeye Lake on rough road. Good population of brook, grayling and cutthroat. Mosquitoes as big as fish. Very pretty lake, campsites, stocked.

BLUE, P-8. 3 acres, elevation 9,600 feet, maximum depth 4 feet. Northwest from end of Norway Flats Road over small ridge, 500 yards north of Hourglass Lake. Winterkills, fishless.

BOOKER, A-35. A beautiful high mountain lake, 5 acres, maximum depth 8 feet, average depth 4 feet, elevation 10,800 feet. 2¼ miles on posted trail north of Trial Lake. Contains brook and cutthroat trout 6 to 12 inches. Good fishing and camping places.

BROADHEAD, P-50. 8 acres, 9,500 feet elevation, average depth 4 feet. 1 mile south of Little Deer Creek dam-site. No trail. A large, fishless pond that would winterkill.

BUCKEYE, A-3. 6 miles north on Spring Creek Road. 8 acres, elevation 9,600 feet, maximum depth 7 feet, average depth 6 feet. Fished heavily by Scout groups. Contains Eastern brook to 12 inches. Stocked annually.

CAROL, A-21. 2.7 acres, elevation 9,900 feet, average depth 5½ feet. A very pretty mountain lake sitting in timbered country with open shores. Fishless. ¼ mile southwest of Washington Lake. Stocked experimentally.

CASTLE RESERVOIR, P-59. 10 acres, elevation 9,800 feet, maximum depth 20 feet. Subject to 10 foot water level fluctuation. 6 miles up Yellow-pine Creek into Upper Setting Creek. Lake sits at east base of Castle Peak. Good later in season for Eastern brook and Arctic grayling. Stocked. Camping places, some horse feed.

CLEGG, A-18. From Bald Mountain Pass, west 1½ miles on posted trail. 7 acres, elevation 10,200 feet, maxi-

mum depth 12 feet, average depth 7 feet. A very pretty lake lying in open, rocky, timbered country. Eastern brook, cutthroat trout 10 to 14 inches. Record of winter kill. Stocked. Camp places available.

CLIFF, A-34. 10 acres, elevation 10,200 feet, maximum depth 20 feet, average depth 10 feet. 1 mile north west of Trial Lake on posted trail. Lies on the east side of Mt. Watson. Contains Eastern brook 6 to 14 inches. Stocked with brook trout. Rafts, campsites.



CLYDE, A-28. 24 acres, elevation 10,800 feet, maximum depth 24 feet, average depth 10 feet. 2¼ miles northwest of Trial Lake. Trail posted. Eastern brook and cutthroat. Camping places. Stocked. Good fishing at times.

CRYSTAL, A-22. Just north of Washington Lake and ¼ mile west of Trial Lake. 9.8 acres, elevation 10,200 feet, maximum depth 9 feet. A pretty lake sitting in open country surrounded by high stands of timber. Small Eastern brook 8 to 10 inches. Heavily fished. Stocked with brook annually. Camping sites. Rafts.

CUTTHROAT, A-6. West of Long Lake on trail to Island Lake. 1.8 acres, maximum depth 10 feet, elevation 10,200 feet. Situated in timbered country. Lake shore open. A few dead falls in lake. Good fishing for cutthroat. Some brook and rainbow may

still populate the lake from plants prior to 1953. Stocked annually with cutthroat trout. Camping sites and horse feed.

DIAMOND, A-22. 2 acres, elevation 9,900 feet, average depth 4 feet. ½ mile east of Trial Lake, sits below Star Lake. Over half of this lake's surface is covered with water lilies. Fair fishing for Eastern brook 8 to 14 inches. Stocked with brook.

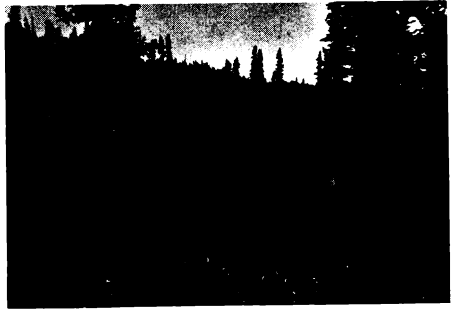
DIVIDE NO. 1, A-36. A very picturesque mountain lake sitting in open country with scattered timber. 7 acres, elevation 10,500 feet, average depth 3 feet, maximum depth 5 feet. Lies near the base of Mt. Watson. 2¼ miles northwest of Trial Lake on posted trail. Contains a population of brook to 10 inches. Camping places and horse feed. Stocked.



DUCK, A-17. Sits south of Fire Lake, total distance from Trial Lake 4½ miles. 3.7 acres, 14 feet maximum depth, 10,500 feet elevation. A very pretty, fishless lake. Stocked experimentally with brook.

DUCK, A-7. (Also called North Fork No. 6.) 10.8 acres, maximum depth 32.5 feet, elevation 10,000 feet. An artificial impoundment subject to draw-down. Sits in open rocky terrain. Excellent for cutthroat trout 8 to 14 inches. Stocked annually with cut-

throat. Poor camping area near lake. Lake sits west of Pot Lake and east of Fire Lake on trail.



EAST SHINGLE CREEK LAKE, A-20. 7 acres, maximum depth 44 feet, average depth 25½ feet, elevation 8,800 feet. A very difficult lake to locate. 6 miles north along Shingle Creek Trail which starts on Highway 150 west of Norway Flats Road. Lake lies west over high ridge from Norway Flats. Stocked with brook. Fishing should be excellent as very few people visit this lake. Good campsites.

FAITH, A-16. 2 acres, elevation 10,000 feet, maximum depth 5 feet, average depth 4 feet. 1 mile north on posted trail from Trial Lake. Sits in open meadow just beyond Wall Lake. Experimentally stocked with brook.



FIRE RESERVOIR, A-14. 10 acres, elevation 10,500 feet, 67 feet maximum depth. Some fluctuation. 4½ miles west of Trial Lake, 200 feet south of Junior Lake. Sits in rocky-timbered country. Eastern brook and cutthroat trout. A few camping sites. Stocked.

FORKS, A-21. 2 miles west of Trial Lake near tip of Long Lake. ½ acre, 3½ feet maximum depth, 10,200 feet elevation. Cutthroat and brook 6 to 8 inches. Excellent fly fishing for the kids.



HAYSTACK, No. 1, A-9. 21 acres, elevation 9,900 feet, maximum depth 35 feet, average depth 11 feet. 7 miles north on Spring Canyon Road which is very rough in this section. Brook and cutthroat 9 to 12 inches. Stocked. Fair to good fishing all season.

HIDDEN, A-15. On good trail 4½ miles from Trial Lake and south of Beaver Lake. 9.8 acres, maximum depth 25 feet. A large lake, very scenic, surrounded by alpine timber. Excellent fly fishing for cutthroat and brook trout to 16 inches. Reported to contain some “lunkers.” Stocked with brook.

HOPE, A-17. 1.5 acres, elevation 9,800 feet, average depth 4 feet. 1½ miles north of Trial Lake on posted trail. Fishless. Sits on plateau overlooking Faith and Wall Lakes.



HOURLASS, P-7. 16 acres, maximum depth 19 feet, elevation 9,600 feet. Northwest from end of Norway Flats Road over small ridge. Small population of brook and cutthroat. Campsites. Stocked. Fair fishing.

ISLAND, A-9. 21 acres, 42 feet maximum depth, elevation 11,000 feet. Lies 1½ miles beyond Long Lake on trail to Big Elk Lake. Open along shores but in rocky, timbered country. A small dam has been placed on outlet. Cutthroat fishing good after June 15. May still contain rainbow trout. Trout run 8 to 16 inches. Campsites.

JACK, A-13. 200 feet west of Weir Lake, 2¾ miles from Trial Lake. 1.1 acres, elevation 10,000 feet, maximum depth 23 feet. A beautiful mountain meadow lake sitting in heavy timbered country. Good for brook to 10 inches. Fine camping area. Stocked.

JAMES, A-31. 2 acres, maximum depth 7 feet, average depth 5 feet, elevation 10,700 feet. A pretty, high, mountain lake. Open shores. Contains Eastern brook 6 to 10 inches. Lies north of Booker and John Lakes. Total distance from Trial Lake 2½ miles. Stocked with brook trout.

JOHN, A-30. 6 acres, elevation 10,700 feet, maximum depth 10 feet, average depth 5 feet. A pretty, high mountain lake sitting in open, rocky country with only scattered timber. Contains brook to 12 inches. A good place to go on weekends when other areas are crowded. 2½ miles north on posted trail from Trial Lake. Stocked. Few good campsites.

JUNIOR, A-16. Also known as Junior No. 5. 2.4 acres, maximum depth 11 feet, elevation 10,800 feet. Total distance from Trial Lake 5 miles, just north of Fire Lake. Lies in rocky, open, timbered country. Contains a small population of Eastern brook. Experimentally stocked. Good campsites and horse feed.

JUNIOR NO. 5, A-26. 2 acres, maximum depth 3 feet, elevation 10,200 feet. Northwest of Trial Lake 1 mile on trail to Clyde Lake. Small population of Eastern brook. Camping sites and horse feed. Only marginal fishing.

KAREN, A-5. Sits west of Long Lake and south of Cutthroat Lake just north of trail to Island Lake. ½ acre, maximum depth 5 feet, elevation 10,200 feet. Fishless. Good feed for horses around lake. Not stocked.

LAMBERT, A-2. 2 acres, elevation 9,300 feet, average depth 6 feet, maximum depth 7 feet. 3½ miles north on Spring Canyon Road then east to Lambert Meadows, then ½ mile beyond, lake sits in open field. Small population of brook. Hard to catch, but some extremely large fish. Stocked annually.



LILLIAN, A-2. A beautiful mountain lake lying in partly open timbered country. Many good campsites. 100 yards southeast of Long Lake. 1.9 acres, maximum depth 8 feet, eleva-

tion 10,300 feet. Good for small Eastern brook 6 to 8 inches. Prior to 1951 stocked with grayling, now stocked with Eastern brook.

LILLY, P-62. 5 acres, elevation 9,800 feet, maximum depth 13 feet, average depth 9 feet. From Trial some 2 miles east and north along the Mirror Lake Highway #150. Excellent Forest Service campground with table and restroom facilities. Popular lake. Mostly open, wet, boggy shoreline. Boots or a small rubber boat is highly recommended. Stocked with brook and rainbow trout. Fishing is best with flies in the evening.

LITTLE ELK, A-19. (Also known as Pot.) 10 acres, maximum depth 27 feet, elevation 9,200 feet. A fifteen minute walk north of Norway Flats. Sits in timbered country with rocky shores. A high cliff rises from the west shore. Stocked with brook. Also contains a few cutthroat.

LONG, A-1. 2 miles west of Trial Lake on well-marked Forest Service trail. 13.8 acres, elevation 10,300 feet, maximum depth 35 feet. Contains cutthroat, brown and brook trout to 16 inches. Stocked with brook and cutthroat. Fair fishing. There is a 21-foot drawdown in late summer of the water level. Good campsites and horse feed.

LONG POND, A-3. 2 acres, elevation 10,300 feet, maximum depth 5 feet. A connecting stream enters Long Pond from Long Lake. A few trout enter this lake via this stream. Fishing marginal. Not stocked.

LOST RESERVOIR, A-19. 59 acres, elevation 9,800 feet, maximum depth 11 feet, average depth 7 feet. Subjected to extreme fluctuation. A very popular



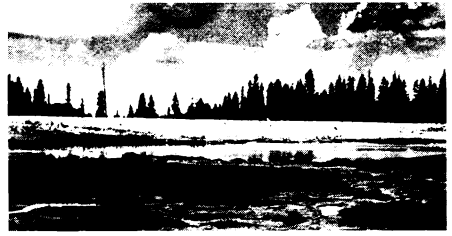
camping area, 1½ miles east of Trial Lake on Highway 150. Fair fishing for rainbow trout 8 to 12 inches. Fished very heavily. Lilly Lake sits across highway and provides fair fishing for rainbow and brook trout.

LOWER LILLY, A-24. 3 acres, maximum depth 16 feet. ¾ mile west of Trial Lake. Area's set aside as botanical station for Brigham Young University. Contains small population of Eastern brook 6 to 8 inches. Heavily fished. Stocked with Eastern brook.

LOWER TWIN, A-33. 3 acres elevation 10,700 feet, maximum depth 14 feet, average depth 7 feet. Timbered country with open shores. 2½ miles north of Trial Lake. Eastern brook and cutthroat trout 6 to 14 inches. Stocked. An excellent fishing lake early and late in the season. Good camping place on Upper Twin Lake.



LOWER YELLOWPINE NO. 2, P-58. 2 acres, elevation 9,400 feet, maximum depth 4 feet. See directions to Upper Yellowpine Lake. Fair fishing for small Eastern brook. Camping places. Stocked annually.



MARJORIE RESERVOIR, A-12. 3.2 acres, elevation 10,500 feet. By trail 1 mile south of Long Lake. Maximum depth 29 feet, but water level fluctuates 25 feet with extreme fluctuation by mid-season. Total distance from Trial Lake 2¾ miles. Good for Eastern brook 6 to 12 inches. Some Arctic grayling may still survive. Stocked with brook trout fingerling. Campsites with some horsefeed in the area. A few brook manage to stay with the water.

MONA RAE, A-11. ½ acre, maximum depth 6 feet, elevation 11,150 feet. South of Ramona Lake 100 feet. Total distance from Trial Lake 4½ miles. Fishless. Not stocked.

POT, A-8. 3.4 acres, elevation 10,200 feet, maximum depth 28 feet. A small clear lake sitting in open timber. ⅛ mile south on trail from Weir Lake. Fair for brook to 10 inches. Stocked. Good campsites and horse feed.



ROCK, A-11. (Also called Lock Lake.) 3 acres, elevation 10,000 feet, maximum depth 22 feet, average depth 13 feet. ½ mile west of Havstack No. 1 and north of Azure Lake 200 feet. Stocked occasionally with brook trout.

RAMONA, A-10. 4.6 acres, elevation 11,150 feet, 21 feet maximum depth. Northeast of Island Lake. Total distance from Trial Lake $4\frac{3}{4}$ miles. Ramona Lake lies in timbered country but with open shores. Good population of cutthroat trout to 12 inches but hard to catch. Stocked with cutthroat trout. Campsites.

SHADOW, A-13. 18 acres, elevation 9,900 feet, maximum depth 17 feet, average depth 10 feet. $\frac{1}{8}$ mile south of Trial Lake below Washington Lake. Lying in heavy timber, this beautiful lake is well worth the walk for a try at the $14\frac{1}{2}$ -inch Eastern brook and cutthroat trout it produces. Stocked. Camping places.

SHALLOW, A-12. (Also known as Haystack No. 2.) 7.4 acres, elevation 9,800 feet, maximum depth 7 feet, average depth 5 feet. 1 mile south of Trial Lake on Spring Canyon Road. No fish. May be stocked experimentally.

SPECTACLE, A-8. (Also known as Hourglass.) 13 acres, elevation 9,500 feet, average depth 7 feet. $\frac{1}{2}$ mile southwest of Buckeye Lake and 5 miles north on Spring Canyon Road. Sits in large open meadow. Contains Eastern brook 10 to 12 inches. Stocked. Camping places.

SPRING CREEK POND, A-4. $2\frac{1}{2}$ acres, elevation 9,600 feet, average depth 2 feet. A fishless pond sitting in logged-over country.

STAR, A-15. 20 acres, elevation 9,400 feet, maximum depth 38 feet, average depth $17\frac{1}{2}$ feet. Subject to extreme fluctuation. Eastern brook and cutthroat trout 10 to 14 inches. An easy walk northeast of Trial Lake $\frac{3}{4}$ mile. Camping places. Better fishing after mid-July.

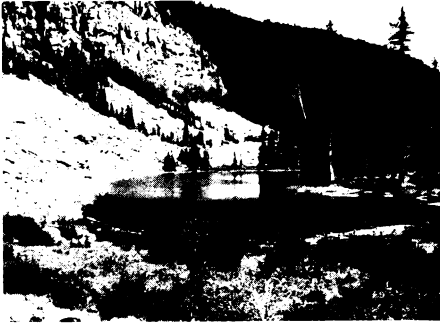
TEAPOT, A-23. 14 acres, elevation 9,900 feet, maximum depth 51 feet, average depth 24 feet. A very popular camping area just off Highway 150, one mile east of Trial Lake. Rainbow and brook trout 6 to 12 inches. Heavily fished all season. Stocked periodically all season.

TRIAL RESERVOIR, A-14. 66 acres, elevation 9,800 feet, maximum depth 60 feet, average depth $26\frac{1}{2}$ feet. Subject to extreme fluctuation later in summer. $\frac{1}{4}$ mile west of Highway 150 on dirt road. Posted on highway. Excellent camping on lake. Quite popular throughout the season. Rainbow trout to 12 inches most common, also an occasional grayling. Trolling from a boat most productive way to fish this reservoir. Starting point for most of the back country lakes in this drainage. Stocked each year.

UPPER LILLY, A-24. 3.2 acres, 12-foot maximum depth. $\frac{3}{4}$ mile west of Trial Lake. Area set aside as a botanical station for Brigham Young University. Lake not stocked.

TRIDENT, A-7. $6\frac{1}{2}$ acres, elevation 9,700 feet, average depth 4 feet. 1 mile up timber road past Buckeye Lake. Sits in open wet meadow. Excellent fly fishing for Eastern brook 10 to 14 inches. Camping places. Stocked.

UPPER TWIN, A-32. 9 acres, elevation 10,800 feet, maximum depth 13 feet, average depth 8 feet. Northeast of Clyde Lake. Total distance from Trial Lake $2\frac{1}{2}$ miles. Contains brook and cutthroat trout. Good camping place on southeast corner of lake. A good place to get away from weekend crowds. Stocked.



UPPER YELLOWPINE #1, P-57. 3 acres, elevation 9,500 feet, maximum depth 12 feet. Up Yellowpine Creek 5 miles then west at first large meadow $\frac{3}{4}$ mile. Lake sits at base of high ridge. Good for brook and rainbow trout. Camping places. Stocked.



WALL LAKE RESERVOIR, A-29. 61 acres, maximum depth 128 feet, average depth 31 feet. Subject to 40-foot fluctuations. An easy walk on posted trail north from Trial Lake. Contains cutthroat, brook and rainbow trout 6 to 14 inches. Fishing better after August 1. Heavily fished on weekends and holidays. Camping places. Stocked.

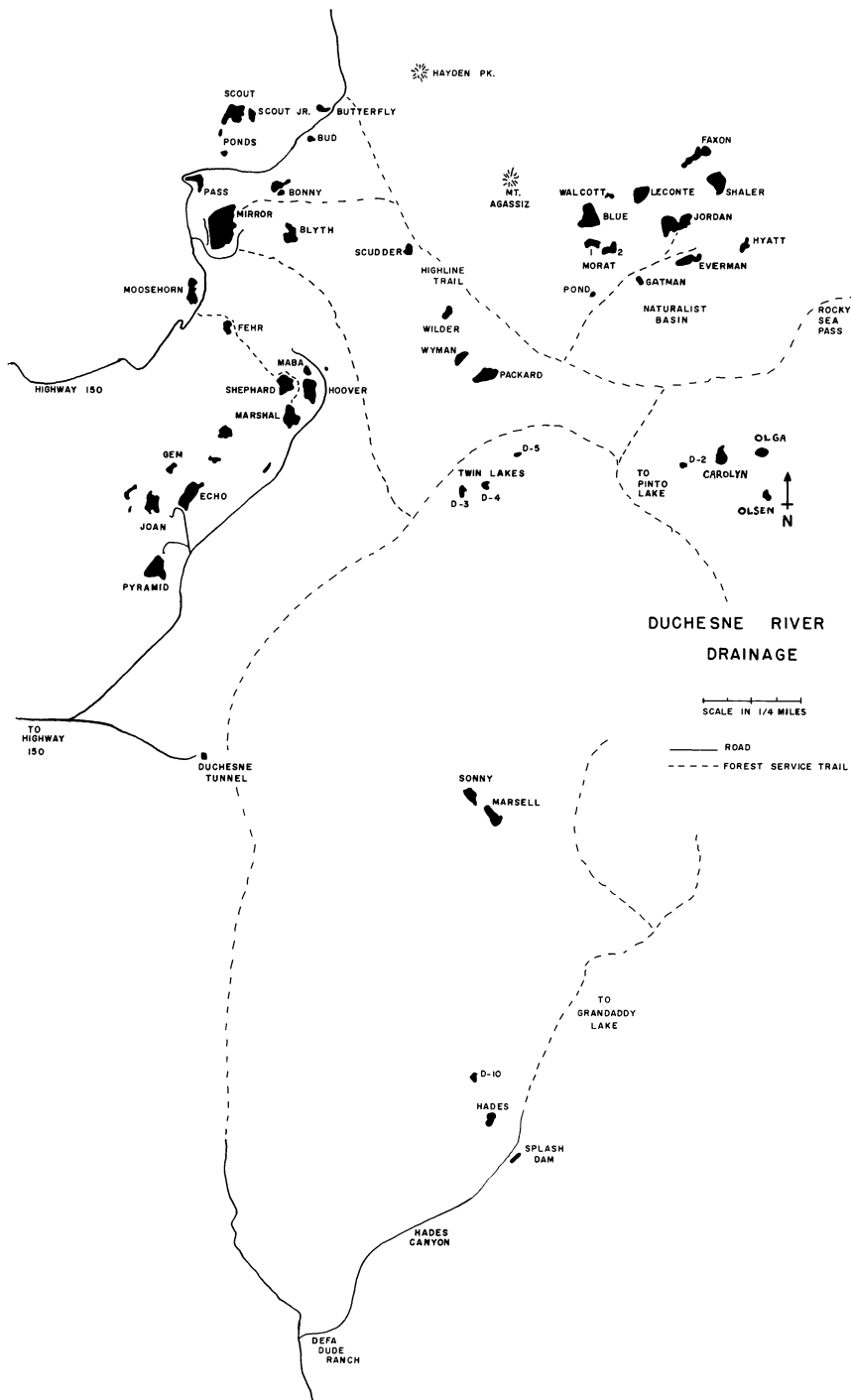
WASHINGTON RESERVOIR, A-23. 48 acres, 53 feet maximum depth, average depth 20 feet, elevation 10,200

feet. Subject to extreme fluctuations. Southwest $\frac{1}{4}$ mile from Trial Lake. Better fishing later in summer. Contains Eastern brook and cutthroat trout to 14 inches. Lake also has population of redbreast shiners and Utah chub. Heavily fished on weekends.

WATSON, A-27. 6 acres, elevation 10,500 feet, 8 feet maximum depth, average depth 6 feet. An easy walk $1\frac{1}{2}$ miles northwest on good trail from Trial Lake. Eastern brook and an occasional cutthroat. Good fly fishing. Open shores, camping places. Stocked with brook trout. Between Cliff and Clyde Lakes.

WEIR, A-4. 4.8 acres, elevation 10,100 feet, maximum depth 22 feet. A natural lake converted into a reservoir with the placement of an earth fill dam. Water can be dropped 17 feet. Weir sits south of Long Lake on trail to Hidden Lake. Good fishing for cutthroat and Arctic grayling. Stocked with cutthroat. Campsites.

WEST SHINGLE CREEK LAKE, P-60. 10 acres, elevation 9,000 feet, maximum depth 21 feet, average depth 8 feet. 6 miles by Forest Service trail north of Highway #150 near the Shingle Creek Campground. A spring-fed lake lying in a pocket at the head of the creek. Fair campsites and horse feed in the area. Both rough fish and trout population. Very rough terrain. Stocked experimentally with brown trout.



DUCHESNE RIVER

The lakes in this drainage are some of the most popular in the Uinta Mountains. Some are heavily fished as access to most is by road or only a few miles by trail. Half of this drainage lies within the boundaries of the Uinta Primitive Area. Twenty-three of these lakes contain populations of Eastern brook, cutthroat or rainbow trout. The Arctic grayling can also be found in a few lakes. Most trails lead into this basin from Mirror Lake which is located 33 miles northeast of Kamas, Utah on State Highway 150. Plan on packing horse feed into Naturalist Basin later in the season.

DUCHESNE RIVER DRAINAGE



BLUE, Z-32. 6 miles along Highline Trail from Mirror Lake to Naturalist Basin Junction, then 3 steep miles north into basin. Blue Lake lies at base to west side of basin in open country. This lake is not usually free of ice until the second week of July. Eastern brook, rainbow and cutthroat trout 6 to 14½ inches. Usually excellent fly fishing throughout the short summer season. No campsites or horse feed around lake. Good camping area near Jordan Lake. Stocked with Eastern brook. 18 acres, elevation 11,000 feet, maximum depth 36 feet, average depth 20 feet.

BLYTHE, Z-20. On trail ¾ mile southeast of Bonnie or east of Mirror Lake. 5 acres, elevation 10,000 feet, maximum depth 14 feet, average depth 7.9 feet. Partly open and partly timbered around the shores, the deepest part of the lake being near the middle

50 yards offshore. Fair fishing for Eastern brook 8 to 11 inches. Stocked annually with brook trout.

BONNIE, Z-6. 10 acres, elevation 10,500 feet, maximum depth 7 feet, average depth 3.7 feet. East of Highway 150 near the Scout Lake turnoff. Good trail. Lake can be seen from road. Fair to good fishing for Eastern brook 8½ to 13 inches. Sits in open meadow. Stocked with Eastern brook.

BUD, Z-2. East of Highway 150 down a small ridge, 2½ miles north of Mirror Lake. 1.6 acres, elevation 10,500 feet, 13 feet maximum depth, 8.1 feet average depth. Heavily fished throughout season for small Eastern brook. Only fair fishing. Stocked annually with Eastern brook.

BUTTERFLY, Z-1. Follow Highway 150 3 miles past Mirror Lake to Hayden Summit. Lake sits to left of road. 4 acres, elevation 10,600 feet, 11 feet maximum depth, 5.3 feet average depth. A small lake lying in open, timbered country. Fished heavily for medium-sized Eastern brook and rainbow trout. Good campsites for tent or house trailer. Stocked by truck annually.

CAROLYN, Z-42. 2 acres, elevation 10,300 feet, maximum depth 17 feet,



average depth 7 feet. South of Highland Trail when it heads over Rocky Sea Pass, about 8 miles from Mirror Lake. Arctic grayling and rainbow trout 8 to 14½ inches. Good lake for fly fishing. Sits in partly open country. Good camping areas and horse feed. Stocked with cutthroat trout since 1961.

CASTLE, D-14. 2 acres, elevation 10,600 feet. ¼ mile north of Highway 150, at the sharp turn ½ mile southwest of Butterfly Lake, Z-1. A tiny lake lying at the base of some steep rock slides. Slow fishing. Stocked occasionally.

ECHO, Z-16. 19 acres, 39 feet, maximum depth, average depth 21.2 feet, elevation 9,200 feet. 4 miles on dirt road that leads to the east portal of the Duchesne tunnel, then another 2½ miles north to first turn to left ½ mile. Many logging roads criss-cross this area. Road ends at Echo Lake. Lake side north of road 200 yards. A lake in dense timber containing Eastern brook and golden trout. Presently this is the only lake in Utah to contain golden trout. These fish range from 6 to 9 inches. What they do not make up in size they do in beauty. In late May and early June these fish can be seen spawning in the lake's inlet and outlet. Good campsites, rafts.

EVERMAN, Z-36. (See directions to Blue Lake.) 8.1 acres, elevation 10,500

feet, maximum depth 7 feet, average depth 3.5 feet. A small fishless lake lying south of Jordan Lake. Lake was found unsuitable for trout.

FEHR, Z-7. 6.5 acres, 27 feet maximum depth, 10.4 average depth, elevation 10,400 feet. Well-marked trail starts across highway from Moosehorn Lake then heads east ¼ mile to lake. A popular, heavily fished lake with good fishing for Eastern brook and cutthroat trout to 13 inches. Arctic grayling may still be found in the lake in limited numbers. Sits in an open meadow surrounded by a heavy stand of trees. Stocked with Eastern brook.

GEM, Z-18. (See directions to Echo Lake.) 3 acres, elevation 10,500 feet, maximum depth 16 feet, 8 feet average depth. On poor trail ½ mile northwest of Echo Lake on top of ridge. A clear mountain lake lying in timbered country. Reported good fishing from 8½ to 14½ Eastern brook. Not as heavily fished as the surrounding lakes. No campsites. Stocked with Eastern brook.

HADES, D-11. 3 acres, 23 feet maximum depth, elevation 10,000 feet. From Defa Dude Ranch up Hades Canyon road 5 miles. Then west over rocky terrain ¾ mile. No trail. Stocked in 1961 and 1962 with brook trout. Few campsites and little horse feed.

HOOVER, Z-10. 17 acres, 25 feet maximum depth, 9.7 feet average depth, elevation 10,400 feet. 4 miles on dirt road that leads to East Portal of Duchesne River, then north on logging road 6 miles. Hoover sits west of road in same basin as Marshal, Shepard and Maba Lakes. Many logging roads criss-cross this area. The best rule is to stay on well traveled roads. Good

early and late fishing. Camping spots. Planted with Arctic grayling some years back — may still be a few in the lake. Cutthroat and Eastern brook predominant to 12 inches. Stocked with Eastern brook.

HYATT, Z-37. (See directions to Blue Lake.) 3 acres, 10 feet maximum depth, 4 feet average depth, elevation 10,500 feet. A very pretty mountain lake sitting in open and timbered country east of Jordan Lake. Presently this lake is fishless. Stocked experimentally with brook in 1962. Lake may winter kill. Good horse feed and campsites.

JOAN, Z-19. (See directions to Echo Lake.) 16 acres, elevation 9,500 feet, maximum depth 15 feet, average depth 8.8 feet. West of Echo Lake ½ mile. An open lake in logged-off land. Only fair fishing for Eastern brook 8 to 12 inches. Truck campers can be driven within a few hundred yards of lake. Stocked with Eastern brook.



JORDAN, Z-35. (See directions to Blue Lake). A beautiful alpine lake sitting in partly open and partly timbered country. Good camping sites and horse feed. 22 acres, elevation 10,500 feet, maximum depth 30 feet, average depth 16.5 feet. Eastern brook, rainbow and cutthroat trout 8 to 15 inches. Good fishing most of the short season. Arctic grayling reported taken from lake. Stocked with brook trout.



LECONTE, Z-33. (See directions to Blue Lake.) 10 acres, elevation 11,000 feet, maximum depth 15 feet, average depth 9 feet. Northeast of Blue Lake along base of ridge. A high mountain lake sitting in open country. Little horse feed or camping sites. Excellent fly fishing for cutthroat and rainbow trout 9 to 15 inches. Some years snowdrifts may block way to lake in mid-July. Stocked since 1959 with cutthroat trout.

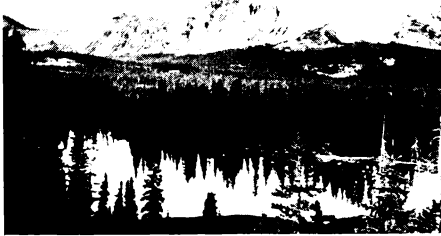
MABA, Z-8. 3 acres, elevation 10,400 feet, maximum depth 19 feet, average depth 10 feet. 2½ miles east of Highway 150 by Moosehorn Lake. (Or see directions to Hoover Lake.) Partly open and partly timbered around the shore. Camping places limited. Fair fishing for Eastern brook 8½ to 10½ inches. Lake at one time contained a grayling population. Stocked with Eastern brook.

MARSELL, X-11. 20 miles from Mirror Lake in Granddaddy Basin. 1 mile west of trail between Betsy and Fish Hatchery Lakes in Rock Creek Drainage. 15 acres, elevation 9,700 feet, maximum depth 50 feet, average depth 24.5 feet. Situated in beautiful timbered country, mostly open along shore. Contains Eastern brook, rainbow and cutthroat trout 8 to 12 inches. Stocked with cutthroat trout since 1958. Campsites, rafts and horse feed available. Fish travel freely from Marsell to Sonny Lake that lies to the North.

MARSHALL, Z-11. 18 acres, 36 feet maximum depth, 14.4 feet average depth, elevation 10,500 feet. Some exceptionally large Eastern brook to 17 inches and cutthroat to 11 inches. Stocked with brook trout. A lake that lies in timbered country. Camping places and rafts. Lies southwest of Hoover (see directions to Hoover Lake) and a few hundred feet off the logging road.



MIRROR, Z-3. 50 acres, elevation 10,500 feet, 41 feet maximum depth, average depth 16.6 feet. On Highway 150, 33 miles northeast of Kamas, Utah, 1 mile past summit. Boats, horses and camping places at the lake, accommodations at Mirror Lake resort. Mirror is also the starting point for numerous lakes that lie east within the wilderness area. Stocked with rainbow and Eastern brook this lake provides good fishing throughout the season for trout up to 13 inches. An occasional larger fish taken. Heavily fished on weekends.



MOOSEHORN, Z-4. (Also known as Moosehart.) 8 acres, 8 feet maximum

depth, 5 feet average depth, elevation 10,600 feet. ¼ mile south on Highway 150 from Mirror Lake. A small but beautiful lake sitting in green timber. Excellent camping location for truck trailers. Stocked with rainbow trout.

MORAT I, Z-31. (See directions to Blue Lake.) 4.9 acres, elevation 10,500 feet, maximum depth 15 feet, average depth 13 feet. Mostly open around the shores, a typical deep mountain lake lying next to rocky cliff. Excellent fishing for large Eastern brook and cutthroat trout 8 to 17 inches. This lake usually will not be free of ice until the second week in July. One good camping site, sparse horse feed. Stocked since 1958 with Eastern brook. Morat II, a small fishless pond sits southeast.



OLGA, Z-43. 4 acres, 8 feet maximum depth, 5 feet average depth, elevation 10,300 feet. A very pretty mountain lake sitting south of Carolyn Lake. Mostly timbered with occasional open country. Fishless lake that winter kills.

OLSEN, Z-26. 3 acres, elevation 10,000 feet, maximum depth 4 feet, average Depth 2 feet. A fishless lake at head of Four Lake Basin. No plans for stocking this water.

PACKARD, Z-15. South of Wyman Lake 20 yards. 8 acres, elevation 10,000 feet, maximum depth 52 feet, average depth 23.7 feet. Contains Eastern brook and Arctic grayling and a few

brown trout 8 to 14 inches. Clear water, beautiful country, horse feed and nice places to camp. Stocked with Eastern brook.

PASS, Z-5. First lake north of Mirror on Highway 150. 3 acres, 6 feet maximum depth, average depth 3.3 feet, elevation 10,500 feet. Fair fishing for rainbow and Eastern brook. Heavily fished throughout the season. Off-road parking has been provided. Stocked annually.

PYRAMID, Z-17. (See directions to Echo Lake.) Lake sits south of Echo on turnoff near base of high ridge. 16 acres, maximum depth 34 feet, average depth 11.2 feet, elevation 10,000 feet. A timbered lake with a rocky west shore, heavily fished in early season for Eastern brook. Fair fishing. Once contained Arctic grayling. Good campsites on northern end. Stocked with brook trout.

SCOUT, Z-12. 1 mile north of Pass Lake off to east of Highway 150 up small paved access road. Trail leads from here to lake. Heavily fished by Scout groups throughout the summer. Eastern brook and rainbow to 14 inches. Alternately stocked with cutthroat and brook trout. No camping. 30 acres, elevation 10,600 feet, maximum depth 15 feet, average depth 8.9 feet.

SCOUT JR., Z-47. West of Scout Lake. 4.7 acres, elevation 10,600 feet, average depth 3 feet, 125 yards long. Fishless lake that would winter kill.

SCUDDERS, Z-21. 3 acres, elevation 10,000 feet, maximum depth 10 feet, average depth 6.5 feet. On way to Wilder Lake from Mirror Lake. Lake visible to the south of trail. Plans are

to stock Eastern brook. Fishing may only be marginal. Good campsites.

SHALER, Z-34. A high alpine lake sitting in open, rocky country northeast of Jordan Lake. 13 acres, elevation 10,800 feet, maximum depth 7 feet, average depth 5 feet. Excellent fly fishing for cutthroat trout and grayling 7 to 10 inches, and rarely, big rainbow. Stocked with cutthroat. No camping sites or horse feed.

SPLASH DAM, D-9. 7 acres, elevation 9,500 feet, maximum depth 4 feet. From Defa Dude Ranch north up Hades Canyon road five miles. Lake sits east of road. Lake contains a few large trout. Fishing fair. Campsites.

SHEPARD, Z-9. 13 acres, elevation 10,400 feet, 32 feet maximum depth, average depth 15 feet. (See directions to Hoover Lake.) West of Hoover $\frac{1}{8}$ mile at base of ridge. Heavy timber. Good fly and spoon fishing in mid-season for Eastern brook averaging 10 inches. Camping places and raft on lake. Stocked with Eastern brook.

SONNY, X-12. 6 acres, elevation 9,700 feet, maximum depth 14 feet, average depth 8 feet. (See directions to Marsell Lake.) A very pretty, small mountain lake surrounded by a heavy stand of timber. Excellent fishing for cutthroat and brook trout $8\frac{1}{2}$ to $12\frac{1}{2}$ inches. Good campsites and horse feed. Stocked with brook.

WILDER, Z-13. 5 acres, elevation 10,000 feet, 14 feet maximum depth, 7.7 feet average depth. A small lake lying in open timbered country between Scudder and Wyman Lakes and en route to Rocky Sea Pass. Horses may be secured at Mirror Lake. Good campsites. Lake cannot be seen from trail which lies north of the lake. Ex-

cellent fly fishing for Eastern brook and cutthroat trout to 12 inches. Often by-passed. Stocked annually with Eastern brook.

WYMAN, Z-14. 5 acres, 17 feet maximum depth, 5.8 feet average depth, elevation 10,000 feet. South of Highland trail from Mirror Lake to Rocky Sea Pass ¼ mile past Wilder Lake. Lake cannot be seen from trail. Contains Eastern brook and cutthroat trout. Campsites and horse feed. Stocked with brook.

Vincent, Frederic. Gates, Jon L. Regenth
Lakes of the high Uintas : Weber, Provo,

Utah State Library Division



3 1110 00044 8324

**PLEASE LEAVE THESE BEAUTIFUL MOUNTAINS AND
LAKES THE WAY YOU WOULD LIKE TO
FIND THEM WHEN YOU RETURN.**

**BURN ALL YOUR BURNABLE LITTER AND PACK OUT
WHAT YOU CANNOT BURN.
IF YOU CAN'T PACK IT OUT, BURY IT.**

LEAVE A CLEAN CAMP AND A DEAD FIRE.