

LAKES OF THE HIGH UINTAS

ROCK CREEK AND LAKE FORK RIVER DRAINAGES

By

FREDERIC VINCENT

JON L. GATES

ALBERT F. REGENTHAL

UTAH STATE DEPARTMENT OF FISH AND GAME

Publication No. 63-5

A Publication of the
UTAH STATE DEPARTMENT OF FISH AND GAME
Harold S. Cráne, Director

© 1963 Utah State Department of Fish and Game
1596 West North Temple
Salt Lake City, Utah

INTRODUCTION

The Uinta Mountains of northeastern Utah are unique in that they are the only major range of mountains in North America to lie in an east and west direction. King's Peak, Utah's tallest point of land, standing 13,498 feet, is hard to distinguish from its sister peaks, all of which stand over 12,000 feet. This is in country of snow-capped mountains, of green meadows, blue lakes, and tall trees. Four of Utah's major rivers, the Duchesne, Provo, Weber, and Bear, originate in the snowfields of these mountains.

Although a number of mountain lakes and basins have been investigated over the years, the first comprehensive lake study undertaken by the Utah State Department of Fish and Game began in the summer of 1955. The information that was gathered over the years may have changed somewhat by now. Each lake's physical and biological features are always changing from year to year, and so our findings must also change. This results in a changing management policy. This policy is simply to stock the right kind and number of trout in the proper lake so that the net result is a large healthy trout in the sportsman's creel.

The old means of utilizing pack animals for stocking these mountain lakes meant that only a few lakes could be planted each year. Since 1955, planes have been utilized for planting these remote lakes. Hundreds of lakes are now stocked each year with Eastern brook, cutthroat and rainbow trout. The more inaccessible lakes are stocked on three- and four-year cycles. The more heavily fished lakes are planted on one- and two-year cycles. Care is taken not to overstock these lakes because it usually results in small, poorly developed trout.

The trout that are stocked by plane are less than three inches in length. These fish are used to replenish the present populations in some lakes while other lakes that our surveys have found to be favorable for planting, are stocked for the first time. Because the growing season for the small trout is very short, June through August, growth is frequently quite slow. In most areas by the trout's third year he has reached 8 to 12 inches. The Eastern brook and cutthroat trout are the predominant species stocked. There are several reasons for this — brook and cutthroat have demonstrated an ability to grow and survive better in many mountain lakes, particularly where competition exists between species, and also because most of the lowland waters are managed primarily for a rainbow and brown trout fishery.

The use of brook and cutthroat in the mountain lakes where they seem to do well, provides variety in the angler's creel. Brook trout are also used in a number of lakes because of their ability to reproduce in spring and seep areas where tributaries are not present. The Arctic grayling can also be found in many Uinta lakes. This fine fish not only provides tremendous fly fishing, but its beauties are surpassed by none.

As most of our Uinta Mountain lakes lie in remote basins far from the nearest road, it is recommended that trips be well planned and adequate preparations made beforehand. Most of these lakes can be reached over well-marked U.S. Forest Service trails. Ordinarily, trips up to five miles can be made by foot when the fisherman plans to spend only one day on the lake before returning home that evening. However, back-packers who wish to stay overnight can easily reach farther lakes. Horses and pack animals are advisable for longer stays. Names of packers may be obtained from Conservation Officers or Forest Rangers. Reservations should be made well in advance. Because of the extreme altitudes and unpredictable weather, warm clothing and rain gear should always be carried. Snow showers are common all season at higher elevations. Bug repellent for camper and horse is a necessity until mid-August. It is usually after the first week of July before many of the higher lakes become accessible. Fishing may last through September. No attempt was made to list all the lakes in the Uinta Mountains in this publication. Only those that were found to contain populations of game fish and those which are under study are included.

Fishing is unpredictable, especially in the High Uintas. If one lake fails to produce, try another, there is usually one nearby. If you are one who likes elbow room to camp and fish, and to discover new scenic wonders, let us recommend the High Uintas.

ROCK CREEK

The entire drainage lies within the boundaries of the Uinta Primitive Area. Guide service and horses can be acquired at Davies Resort Dude Ranch, P. O. Duchesne, Utah, and the Defa Dude Ranch, Hanna, Utah. Fishermen planning on packing to the head waters of Rock Creek may find it more accessible by leaving from Mirror Lake on Highway 150 and then crossing Rocky Sea Pass. Sixty-five lakes in this drainage contain populations of rainbow, Eastern brook or cutthroat trout. The Arctic grayling can be found in a few lakes. Areas around Granddaddy and Black Lakes are some of the prettiest in the Uinta Mountains.

ROCK CREEK DRAINAGE



ALLEN, X-44-56. 14.7 acres, elevation 10,200 feet, maximum depth 16 feet, average depth 8 feet. Sits at south end of Four Lake Basin some 10 miles from Mirror Lake. Arctic grayling to 15 inches. Natural reproduction. The fish will normally take only small flies. Grayling can be taken in addition to a limit of trout.

ANDERSON, X-117-57. Sits in partly open-timbered country. 2 acres, elevation 10,900 feet, maximum depth 12 feet, average depth 5 feet. Accessible from Moon Lake, Davies resort or Buck pasture. Cutthroat trout to 11 inches. Stocked.

BEDGROUND, Z-46-56. 3 acres, elevation 10,200 feet, maximum depth 15 feet, average depth 6½ feet. Stocked

experimentally with brook in 1962. Sits on trail to Daynes Lake from Granddaddy Lake.

BETSEY, X-7-57. 40 acres, elevation 9,700 feet, maximum depth 44 feet, average depth 17.8 feet. ¼ mile north-west of Granddaddy Lake. Timbered country. Stocked with cutthroat trout. Fish up to 11 inches numerous.

BLACK, X-132-57. 4 acres, elevation 11,000 feet, maximum depth 14 feet, average depth 9 feet. Stocked with cutthroat trout. Heavily fished by Scouts throughout the season. Good camping places and horse feed near lake. Lake lies by trail to Helen and Reconnaissance Lakes.

BOOT, X-124-57. 2 acres, elevation 11,500 feet, maximum depth 17 feet, average depth 11 feet. Sits near base of rim at head of Rock Creek just south of trail. Large population of Eastern brook trout to 11 inches. No camping or horse feed in area. Stocked.

CABIN, RC-42. 4.5 acres, elevation 10,500 feet, maximum depth 16 feet. 2 miles southwest of Rudolph lakes over extremely rough country. No trail. Heavily timbered country. Good population of Eastern brook. Excellent fishing. Stocked.

CONTINENT, X-121-57. At head of Rock Creek drainage, 1½ miles north of Ledge Lake. Sits in open rocky country at bottom of mountain ledge. Cutthroat to 12 inches. No camping or horse feed in area.

DALE, Z-39-56. Lies in Four Lake Basin. 18 acres, elevation 10,500 feet, maximum depth 25 feet, average depth 9 feet. Eastern brook to 15 inches. Some cutthroats may still be taken. Stocked with brook. Camping.

DAYNES, Z-38-56. 36 acres; elevation 10,500 feet, maximum depth 18 feet, average depth 8 feet. A very pretty lake sitting in Four Lake Basin some 9 miles from Mirror Lake. Eastern brook and cutthroat trout to 15 inches. Stocked with brook. Camping and horse feed.

DEAN, Z-40-56. 16 acres, elevation 10,500 feet, maximum depth 44 feet, average depth 17 feet. Stocked with cutthroat trout. Fish up to 13 inches taken. Sits at head of Four Lake Basin. Camping and horse feed.

DIAMOND, X-43-57. 11 acres, elevation 10,200 feet, maximum depth 43 feet, average depth 19 feet. 11½ miles total trail distance from Moon Lake. Lies just past the Rudolph Lakes. At one time contained rainbow trout. Now believed to hold only Eastern brook. Stocked with brook. Camping near lake.

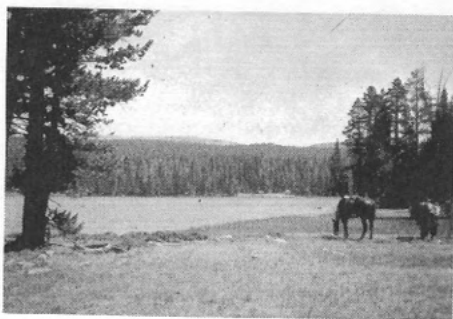
DOC'S, X-15-57. Northeast, 3 miles past Iron Bridge after leaving Davies Resort. 7 acres, elevation 9,600 feet, maximum depth 45 feet, average depth 19 feet. Eastern brook and cutthroat trout. Stocked with Eastern brook. Camping.

FALL, X-122-57. 1 acre, elevation 11,000 feet, maximum depth 4 feet. South of Highline Trail at head of drainage. Fishless.

FARNEY, X-14-57. No trail to lake. Sits west of Fish Hatchery lake one mile. 10 acres, elevation 10,050 feet, maximum depth 14 feet, average depth 8 feet. Possible winter kill during hard winters. Contains cutthroat trout to 11 inches. Camping. Stocked.

FERN, X-5-57. Southeast of La Mar-la Lake on hit-and-miss trail ¼ mile. Good population of Eastern brook to 14 inches. Stocked annually. Camping in general area. Horse feed. 20 acres, elevation 9,000 feet, maximum depth 19 feet, average depth 10 feet.

FISH HATCHERY X-6-57. 35 acres, elevation 9,600 feet, maximum depth 28 feet, average depth 9 feet. Sits in heavy timber. Good camping on lake. Cutthroat trout to 17 inches. Good evening fishing. Stocked. Southwest of Governors Lake 3 miles.



GOVERNORS, Z-24-56. 36 acres, elevation 10,000 feet, maximum depth 9 feet, average depth 3 feet. A large, shallow lake just south of Pinto Lake. Stocked with Eastern brook which average 12 inches, some to 17 inches. A few cutthroats may still survive in this lake. Camping and horse feed.

GRANDDADDY, X-9-57. 120 acres, elevation 9,700 feet, maximum 37 feet, average depth 16 feet. 16 miles on well marked trail from Mirror Lake or 8 miles from Defa Dude Ranch. A very popular well known lake with good populations of cutthroat and Eastern brook, averaging 11 inches. Excellent camping places and plenty of horse feed. Fished heavily but plenty of room on this large lake.

HEART, X-13-57. On trail from Defa Ranch, about 1 mile before Granddaddy Lake. 4.5 acres, elevation 9,900 feet, maximum depth 17 feet, average depth 7.7 feet. Fishless in 1957. Now stocked with cutthroat trout. Should provide fine fishing.

HELEN, X-126-57. 18 miles from Mirror Lake via Rocky Sea Pass. 12 acres, elevation 11,300 feet, maximum depth 14 feet, average depth 8 feet. Good populations of cutthroat trout. Once reported to contain rainbow trout. Now stocked with cutthroats. Camping on lake and some horse feed.

JACK, X-133-57. 2 acres, elevation 11,000 feet, maximum depth 13 feet, average depth 8½ feet, West of Ouray Lake and north of Jill Lake. 16 miles distance from Mirror Lake. Small population of cutthroat trout. Lake is stocked. Camping near lake.

JEAN, Z-41-56: 23 acres, elevation 10,500 feet, maximum depth 23 feet, average depth 13½ feet. 9 miles from Mirror Lake in Four Lake Basin. Arctic grayling, Eastern brook and cutthroat trout to 16 inches. Stocked. Camping and some horse feed. Excellent lake for the fly fisherman.

JEFF, D-8. Fishless in 1961. 5 acres, elevation 10,000 feet, maximum depth 10 feet. Planned for an experimental plant. Lake sits east of Rainbow Lake ¾ mile.

JILL, X-111-57. At head of Rock Creek some 15 miles from Mirror or Davies Resorts. 3 acres, elevation 10,900 feet, maximum depth 25 feet, average depth 14 feet. At one time had rainbow trout. Now stocked with cutthroat trout that reach 12½ inches. Camping and some horse feed.

LA MARLA, X-4-57. 3 acres, elevation 9,300 feet, maximum depth 5 feet. Fishless. 7 miles northwest on trail from Davies Resort.

LEDGE, X-113-57. 1.5 acres, elevation 11,200 feet, maximum depth 13 feet, average depth 8 feet. Total trail distance 20 miles from Mirror Lake or 6 miles over Deadhorse pass from Buck pasture. Cutthroat to 12 inches. Now stocked with Eastern brook. Horse feed and camping around lake.

LIGHTNING, X-127-57. 8 acres, elevation 11,300 feet, maximum depth 23 feet, average depth 8½ feet. Sits just south of Helen Lake on trail. Open shoreline. Few camping places in timber, some horse feed. Cutthroat trout to 13 inches. Stocked.

LILLY PAD, X-2-57. 14 acres, elevation 9,600 feet, maximum depth 14 feet, average depth 7.6 feet. Southeast of Pine Island Lake 100 feet, 12 miles from Mirror Lake. Small population of Eastern brook. Lake is known to winter kill. Stocked. Camping and horse feed near lake.

LODGEPOLE, X-3-57. 17 acres, elevation 9,500 feet, maximum depth 27 feet, average depth 10 feet. On well marked trail 16 miles from Mirror or 8 miles from Davies Resort. Cutthroat, rainbow and brook to 15 inches. Stocked with Eastern brook. Camping and horse feed.

LOST, Z-29-56. 34 acres, elevation 10,000 feet, maximum depth 15 feet, average depth 6 feet. Sits between Palisade and Powell Lakes in Brinton Meadows. Small populations of cutthroat trout. Stocked since 1958 with brook trout.

MARGIE, X-129-57. 3 acres, elevation 11,100 feet, maximum depth 11 feet. Sits near west side of basin between Uinta and Rosalie Lakes. Eastern brook and cutthroat trout to 15 inches. A good lake, seldom fished

MARGO, Z-23-56. West of Pinto Lake $\frac{1}{2}$ mile. Cutthroat trout averaging 12 inches, some to 17 inches. 15 acres, elevation 10,000 feet, maximum depth 29 feet, average depth 11 feet. Stocked.

MID, X-42-57. This lake midway between Rudolph No. 1 and Diamond lakes. Total trail distance from Moon Lake, 11 miles. Good population of Eastern brook. Camping near lake, horse feed. Heavily timbered shores. 4 acres, elevation 10,400 feet, maximum depth 8 feet. Stocked.

MOHAWK, X-10-57. 25 feet, elevation 9,800 feet, maximum depth 23 feet, average depth 11 feet. 1 mile west of Granddaddy Lake. Fine fishing for cutthroat and Eastern brook to 15 inches. Many trout. Good campsites. Stocked.

OLSEN, Z-26-56. 3 acres, elevation 10,000 feet, maximum depth 4 feet, average depth 2 feet. A fishless lake at head of Four Lake Basin. No plans for stocking.

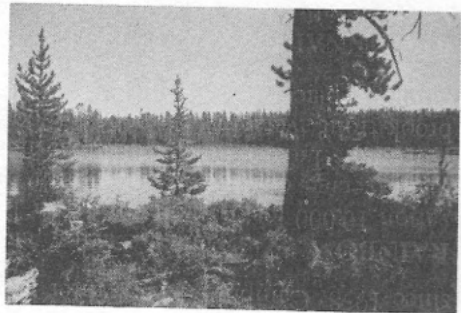
OURAY, X-112-57. 2 acres, elevation 10,900 feet, maximum depth 6 feet. Near head of Rock Creek Drainage $\frac{3}{4}$ mile north of Black Lake. Eastern brook. Stocked. Some camping near lake. This lake is often by-passed by fishermen.

PALISADE, Z-28-56. 31 acres, elevation 10,500 feet, maximum depth 45 feet, average depth 20 feet. On trail from Governor's Lake to Betsey Lake. Contains cutthroat and Eastern brook trout to 15 inches. Some larger fish reported. Stocked. Camping.

PHINNEY, X-119-57. 17 acres, elevation 10,950 feet, maximum depth 30 feet, average depth 19 feet. Sits in open country surrounded by heavy timber. Eastern brook and cutthroat to 13 inches. Lies north of Anderson Lake 1 mile. Stocked. Good horse feed and camping in area.

PINE ISLAND, X-8-57. 70 acres, elevation 9,600 feet, maximum depth 44 feet, average depth 10.8 feet. 3 miles past Governor's Lake on well marked trail. Cutthroat and Eastern brook to 15 inches. A large lake which is difficult to fish because of its size. Well stocked.

PINTO, Z-22-56. 37 acres, elevation 10,000 feet, maximum depth 36 feet, average depth 8.4 feet. 8 miles from Mirror Lake. Large populations of Eastern brook. A few cutthroats left. Excellent fly fishing. Camping along north side and at west end. Good horse feed. Rafts. Stocked.



POWELL, Z-30-56. 27 acres, elevation 10,000 feet, maximum depth 15 feet, average depth 7 feet. Sits east of Brinton Meadows, north of Shadow Lake. A few Eastern brook to 20

inches. Stocked with cutthroat trout since 1958. Camping. May winter kill.

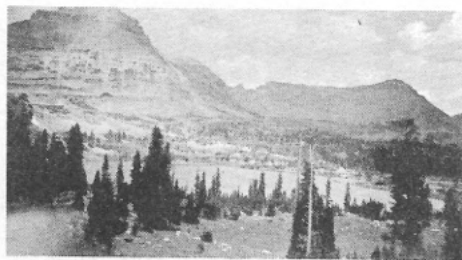
RAINBOW, Z-25-56. 12 acres, elevation 10,000 feet, maximum depth 15 feet, average depth 5.9 feet. South of Governors Lake 1 mile. Cutthroat and brook trout averaging 12 inches. Good camping places and some horse feed.

RECONNAISSANCE, Z-125-57. 4 acres, elevation 11,500 feet, maximum depth 30 feet, average depth 20 feet. At base of Yard Peak next to rocky cliff. 20 miles total trail distance from Mirror Lake. Good populations of cutthroat trout to 12 inches. Now stocked with Eastern brook.

RED CLIFF, X-101-57. 4 acres, elevation 9,600 feet, maximum depth 8 feet, average depth 4 feet. West of Doc's Lake on hit-and-miss trail. Fishless.

ROCK NO. 1, X-96-57. Sits in Squaw Basin, 15 miles total trail distance. Cutthroat and Eastern brook. 7 acres, elevation 10,700 feet, maximum depth 19 feet, average depth 12 feet. Camp near lake. Stocked with cutthroat trout.

ROCK NO. 2, X-97-57. 5 acres, elevation 10,750 feet, maximum depth 17 feet. In Squaw Basin. Northwest at base of large ridge. Population of cutthroat. Excellent fishing but fish are generally small. Stocked.



ROSALIE, X-130-57. 4 acres, elevation 11,300 feet, maximum depth 8 feet, average depth 5 feet. Cutthroat

and Eastern brook. Few cutthroats left. Fish average 10½ inches. Lies northwest of Black Lake. Stocked with Eastern brook.

RUDOLPH NO. 1, X-39-57. 11 miles northwest on Brown Duck trail from Moon Lake. 12 acres, elevation 10,500 feet, maximum depth 46 feet, average depth 19 feet. Largest lake in chain of three Rudolph Lakes. Large population of Eastern brook that run to 12 inches. Rainbow trout in lakes outlet. Camping on northeast side of lake.



RUDOLPH NO. 2, X-40-57. 3 acres, elevation 10,500 feet, maximum depth 7 feet, average depth 4.3 feet. Reached either via Upper Stillwater camp or Brown Duck trail. Middle lake of the three Rudolphs. Contains Eastern brook to 12 inches. Stocked. Camping near lake.

RUDOLPH NO. 3, X-41-57. 2.5 acres, elevation 10,500 feet, maximum depth 14 feet, average depth 8.8 feet. First of the Rudolph Lakes, when coming in on the Brown Duck trail. Small Eastern brook. Camping along lake front. Horse feed. Receives light stocking.

SEA LION, RC-11. 10.2 acres, elevation 10,800 feet, maximum depth 11 feet. From Four Lake Basin across Cyclone Pass east one mile. Inaccessible by horse beyond Cyclone Pass. Fishless in 1961 but stocked since then.

Poor camping places. Could produce large fish.

SHADOW, X-1-57. 10 acres, elevation 9,500 feet, maximum depth 22 feet, average depth 8.9 feet. Well marked trail to Rainbow Lake then 3 miles south to Brinton Meadows. Good camping and horse feed. Rainbow, brook and cutthroat trout to 14 inches. Stocked. Very good fishing.

SHAMROCK, X-98-57. 12 acres, elevation 10,500 feet, 33 feet maximum depth, $\frac{1}{2}$ mile southwest of Squaw Lake in Squaw Basin. Fine fishing for brook and cutthroat to 12 inches. Stocked with cutthroats. Camping near lake.

SQUAW, X-95-57. A diamond shaped lake some 15 miles from Moon Lake or Davies Ranch. 8 acres, elevation 10,600 feet, maximum depth 9 feet, average depth 4.8 feet. Eastern brook and cutthroat trout to 12 inches. Good fishing for a long ride.

SURVEY, RC-20. 3.1 acres, elevation 10,500 feet, maximum depth 12 feet. $3\frac{1}{2}$ miles northwest along old blaze line from Davies Dude Ranch. No fish in 1961. Stocked with Eastern brook. A good lake to try in two years. Camping by lake.

THOMPSON, RC-8. 19.7 acres, elevation 10,500 feet, maximum depth 26 feet. 1 mile northeast across Cyclone Pass. Lake inaccessible by horse beyond Cyclone Pass. Cutthroat trout. Very seldom visited. Few camping sites by lake.

UINTAH, X-131-57. 4 acres, elevation 11,125, maximum depth 14 feet. North of trail after crossing Rocky Sea Pass. Many Eastern brook from 6 to

13 inches. Stocked. Few camping places.

YOUNG, X-100-57. 4 acres, elevation 10,600 feet, maximum depth 19 feet, average depth 12.6 feet. Contains a large population of cutthroat trout to 15 inches. Stocked. From Davies Resort approximately 15 miles north on Fall Creek trail. Camping near lake. Seldom fished.

RC-1. 2 acres, elevation 10,500 feet, maximum depth 20 feet. 1,000 feet north of Gladys Lake. Total trail distance from Mirror Lake, 12 miles. Experimentally stocked with brook trout. Camping and horse feed near lake.

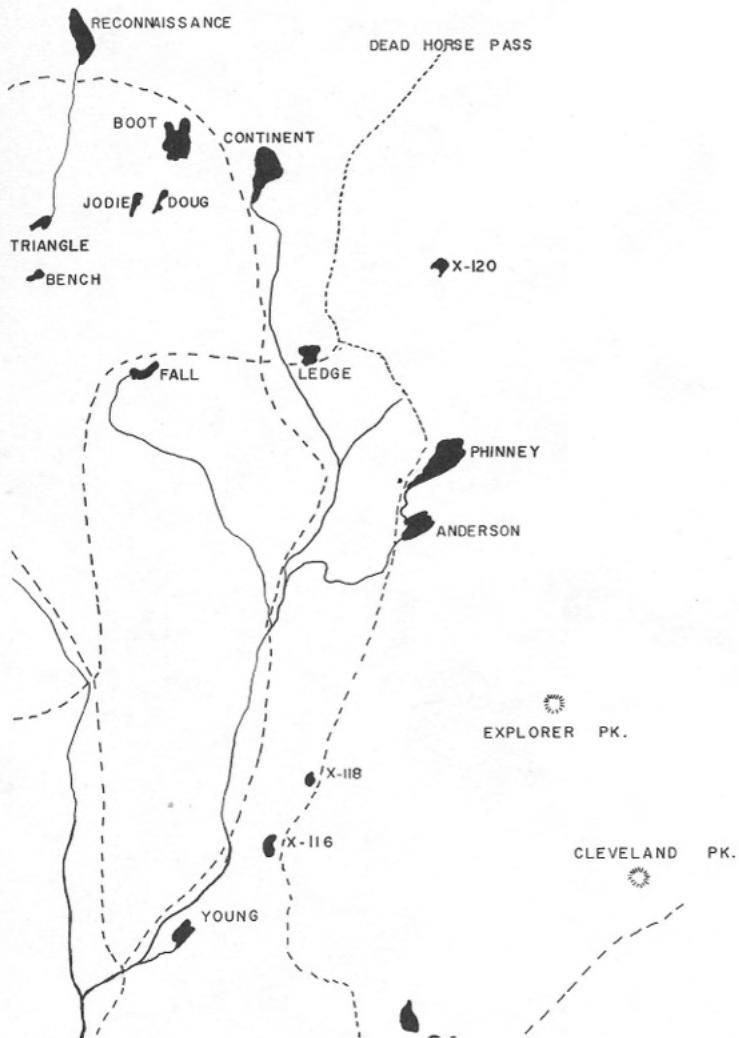
RC-2. 2 acres, elevation 10,500 feet, maximum depth 10 feet, $\frac{1}{2}$ mile north-east of Gladys Lake. No trail, Fishless in 1961. Experimentally stocked with Eastern brook. No camping. Very hard to reach.

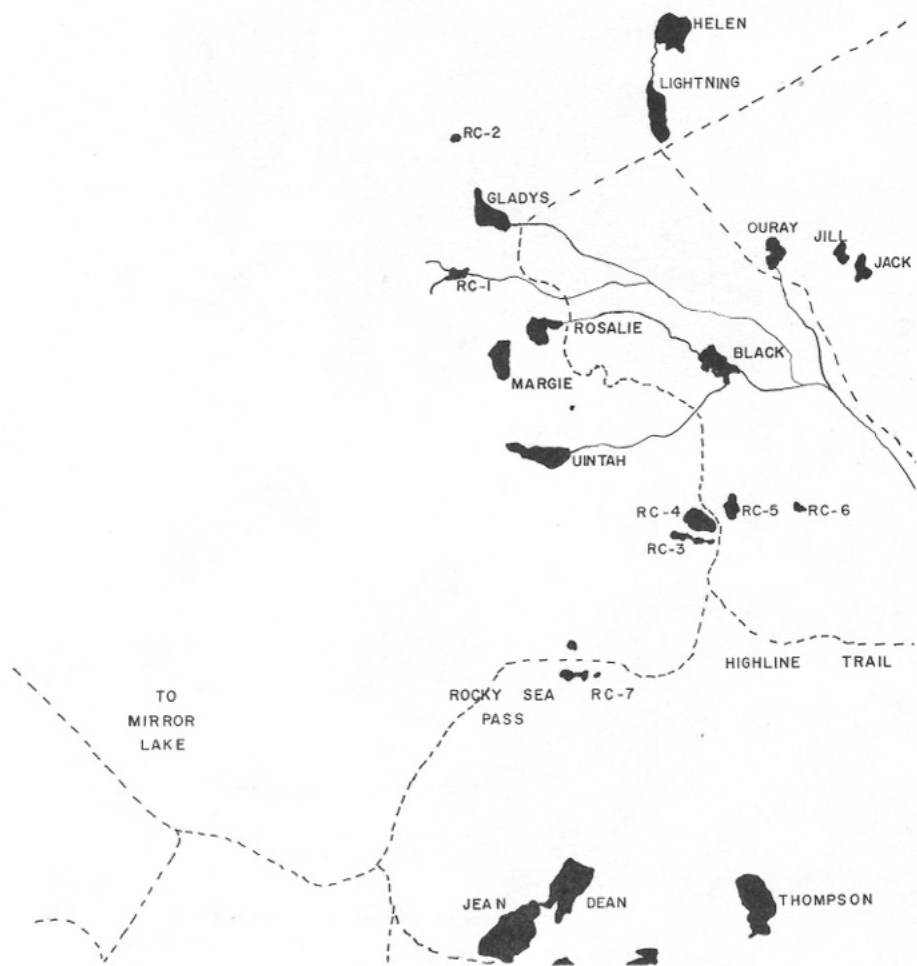
RC-3. 2.2 acres, elevation 10,500 feet, maximum depth 9 feet. 1 mile past Rocky Seas Pass along Highline trail in Rock Creek Basin. Camping places. Eastern brook to 10 inches. Heavily fished. Stocked.

RC-4. 4.4 acres, elevation 10,500 feet, maximum depth 18 feet. Sits near RC-3, 1 mile east of Rocky Sea Pass. Contains Eastern brook to 12 inches. A very pretty lake surrounded by heavy timber and wet grassy meadows. Stocked.

RC-30. 2.5 acres, elevation 10,500 feet, maximum depth 15 feet. 100 feet north of Granddaddy Lakes northern arm. Camping and horse feed. May only provide marginal fishing. Stocked experimentally with brook.

☼
RED KNOB
PK.





RC-38. $\frac{5}{8}$ mile west of Diamond Lake over rocky terrain. Total trail distance from Davies Ranch or Moon Lake Resort, 15 miles. Contains Eastern brook to 11 inches. Very seldom visited by fishermen. Camping places near lake. Stocked. 3 acres, elevation 10,000 feet, maximum depth 20 feet.

X-99-57. Sits in rocky timbered terrain 300 yards west of Shamrock Lake. 6 acres, elevation 10,450 feet, maximum depth 9 feet, average depth $6\frac{1}{2}$ feet. Eastern brook to $10\frac{1}{2}$ inches.

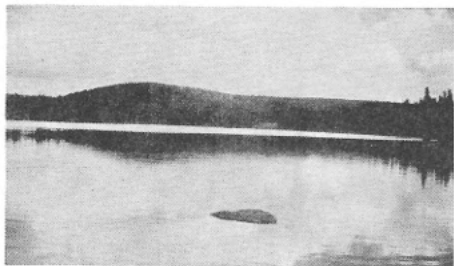
LAKE FORK CREEK

This large drainage lies north of Moon Lake in the Uinta Primitive Area, between Rock Creek and Yellowstone Creek. Trails into this area start near the Moon Lake Resort. To reach resort, head north on State Highway 134 from Duchesne to Mountain Home; then follow marked dirt road north. Cabins, boats, motors or horses are available. This basin provides some of the best wilderness fishing in the Uintas. Lakes contain either Eastern brook, cutthroat or rainbow trout. This is extremely rough country with many of the lakes lying above 10,800 feet.

LAKE FORK DRAINAGE



ATWINE, X-64-57. 29 acres, elevation 10,100 feet, maximum depth 35 feet, average depth 17 feet. 10 miles from Moon Lake. Stocked with cutthroat trout. Contains a small population of Eastern brook. Camping.



BIG DOG, X-32-57. 8 miles on Brown Duck trail from Moon Lake. $\frac{1}{2}$ mile southeast of Brown Duck Reservoir. 6 acres, elevation 10,200 feet, maximum depth 17 feet, average depth 8 feet. Contains Eastern brook $8\frac{1}{2}$ to $12\frac{1}{2}$ inches. Sits in timbered country with west shore open meadow. Horse feed. Stocked. Known to winter kill.



BROWN DUCK RESERVOIR, X-31-57. Northwest of Moon Lake 18 miles on Brown Duck trail. Subjected to 12-foot fluctuation. Dam across outlet. 30 acres, elevation 10,200 feet, maximum depth 38 feet, average depth 16 feet. Cutthroat trout $8\frac{1}{2}$ to 13 inches. Some natural reproduction. Stocked. Good campsites and horse feed. A popular lake providing good fishing.

CLEMENTS, X-74-57. On marked trail 15 miles from Moon Lake. 57 acres, elevation 10,450 feet, maximum depth 49 feet, average depth 21 feet. Cutthroat, rainbow and Eastern brook trout to 12 inches. Excellent fly fishing. Camping and horse feed. Stocked.

COLOROW, X-63-57. 4 acres, elevation 10,350 feet, maximum depth 26 feet, average depth $11\frac{1}{2}$ feet. 10 miles from Moon Lake. Southwest of Atwine Lake $\frac{1}{2}$ mile. Cutthroat and brook trout to 11 inches. Stocked, camping and horse feed.

CRATER, X-94-57. 27 acres, elevation 11,500 feet, maximum depth over 130 feet, average depth 85 feet. One of the deepest lakes in these mountains. Lake sits in open, rocky country. Cutthroat and brook up to 15 inches. Stocked with Eastern brook and cutthroat trout. About 30 miles ride from Moon Lake.

ISLAND RESERVOIR, X-34-57. 41 acres, elevation 10,250 feet, maximum depth 48½ feet, average depth 11½ feet. 9 miles on Brown Duck trail. Cutthroat 8 to 13 inches. Stocked. Rafts, camping places. Popular lake, best fishing in evenings.

KIDNEY, X-35-57. 120 acres, elevation 10,400 feet, maximum depth 112 feet, average depth 48 feet. 10 miles from Moon Lake on Brown Duck trail. Extremely hard lake to fish because of its size. Rubber boat is recommended. Contains 8 to 12-inch cutthroat trout. Larger fish are known to populate the lake if fishermen could get to them. Camping places on lake.

LAMBERT, LF-21. 7 acres, elevation 11,000 feet, maximum depth 15 feet. Sits at head of basin, 20 miles on rough trail from Moon Lake. Scattered timber. Holds a nice population of large Eastern brook 10 to 18 inches. Stocked. No horse feed near lake.

LF-8. 7.6 acres, elevation 10,300 feet, maximum depth 15 feet. Southwest of Clements Lake ¼ mile over cattle trail. Contains a large population of cutthroat trout 7 to 9 inches. Timbered country. Horse feed and some camping areas. Stocked.

LF-16. 4 acres, elevation 10,500 feet, maximum depth 8 feet. Total distance from Moon Lake 22 miles. Sits in East Basin ⅝ mile southwest of trail. Fishless in 1961. Cutthroat stocked.

Camp and horse feed. Rough trail past this point.

LF-22. 4 acres, elevation 11,000 feet, maximum depth 14 feet. Lies below Squaw Pass and west of Porcupine Pass 25 miles on rough trail from Moon Lake. Some horse feed and camping places. Fishless in 1961, will be stocked within the next two years. May produce large fish.

LILLY PAD, X-37-57. 1½ acres, elevation 10,450 feet, maximum depth 8 feet, average depth 5 feet. 12 miles on trail ¼ mile above Kidney Lake. Cutthroat to 14 inches. These fish migrate from Kidney into Lilly Pad Lake. Camping, horse feed.

LITTLE DOG, X-33-57. 7 acres, elevation 10,100 feet, maximum depth 12 feet, average depth 8 feet. Mostly timbered with rocky, open shore. Lake is known to winter kill. Stocked with Eastern brook. Lake had complete kills in 1957 and 1961. Eight miles on Brown Duck trail, ½ mile southwest of Brown Duck Reservoir.

MILK, X-38-57. 1 acre, elevation 10,550 feet, maximum depth 5 feet, average depth 4 feet. ¼ mile above Twooose Lake, 12 miles from Moon Lake. Fishless pond. Cutthroat in outlet that migrate from Twooose Lake.

MOON LAKE. The largest lake in the Uinta Mountains. Subject to fluctuation. Boats, motors, cabins, horses, guide service and meals available at the Moon Lake Resort. The Moon Lake Camp also provides an excellent camping site for weekend campers. This area does not usually open up until after the first of June. Moon Lake contains extremely large brown trout up to 18 pounds. There are also large populations of cutthroat,

Eastern brook and rainbow trout along with the Kokanee salmon. Most trails into Lake Fork Drainage originate at this lake.

PICTURE, X-82-57. 21 acres, elevation 10,900 feet, maximum depth 13 feet, average depth 9 feet. 20 miles from Moon Lake on rough trail at head of East Basin across East Basin Pass. Popular lake. Eastern brook and cutthroat, to 20 inches. Good campsites and horse feed. Stocked with brook trout.

TOQUER, LF-25. 7 acres, elevation 10,000 feet, maximum depth 32 feet. 8 miles northeast of Moon Lake along Fish Creek trail. Sits in timbered country. Most of the lake shores are open, good camping places and horse feed. Contains a large population of Eastern brook 6½ to 13 inches. Some cutthroat trout. Natural reproduction. Excellent fishing. Stocked. Several lakes sit in the immediate proximity of Toquer but all were found to be too shallow to hold trout.



TWOROOSE, X-36-57. 12 miles on trail from Moon Lake past Kidney Lake. 6 acres, elevation 10,450 feet, maximum depth 37 feet, average depth 10½ feet. Cutthroat trout 6 to 15 inches numerous. Stocked. Lake sits on summit leading into Rock Creek. Camping.

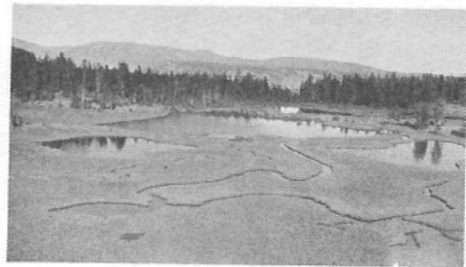
X-66-57. 1.5 acres, elevation 10,175 feet, maximum depth 5 feet. West

of Atwine 1 mile. Small population of Eastern brook migrates between X-66 and Atwine Lakes. Timbered, with small wet meadow at west end of lake.

X-75-57. 3 acres, elevation 10,500 feet, maximum depth 15 feet, average depth 7½ feet. West of Clements Lake ⅛ mile. Total trail distance 15 miles. Cutthroat and brook trout to 12 inches. Camping. Stocked. Sits in heavily timbered country.

X-78-57. 8 acres, elevation 10,650 feet, maximum depth 18 feet, average depth 10 feet. A pretty mountain lake, partly open and partly timbered around the shore. Reported very good fishing for cutthroat and Eastern brook to 13 inches. Stocked with cutthroats. Lies north of Clements Lake ¼ mile.

X-79-57. 2 acres, elevation 10,550 feet, maximum depth 17 feet, average depth 9 feet. Northeast of Clements ½ mile. Large Eastern brook and cutthroat to 19 inches. Rocky, timbered terrain. Camping and some horse feed. Stocked with cutthroat trout.



X-80-57. 4 acres, elevation 10,800 feet, maximum depth 7 feet. 20 miles from Moon Lake in East Basin. Lake sits in open meadow and is connected by a small stream to several small pot holes. Excellent fly fishing for cutthroat and Eastern brook to 12 inches. Good camping and plenty of horse feed. Stocked.

- X-81-57.** Lies in East Basin near head of basin 18 miles from Moon Lake. A very picturesque lake. 10 acres, elevation 10,850 feet, maximum depth 17 feet, average depth 7½ feet. Stocked with Eastern brook since 1958.
- X-83-57.** Off large meadow in East Basin, 20 miles from Moon Lake. 8 acres, elevation 10,850 feet, maximum depth 9 feet, average depth 5 feet. Stocked with Eastern brook. Fishless in 1957. Good horse feed and camping places.
- X-84-57.** 4 acres, elevation 11,000 feet, maximum depth 18 feet, average depth 11 feet. Lies east of trail ½ mile in East Basin next to shale ridge. Small population of Eastern brook. Camping places, some horse feed. Stocked.
- X-85-57.** Sits in partly open timbered country. ¼ mile east of trail in East Basin. 7 acres, elevation 10,900 feet, maximum depth 14 feet, average depth 6 feet. Large Eastern brook and cutthroat trout to 15 inches. Stocked with brook. Camping on lake.
- X-86-57.** 4 acres, elevation 10,850 feet, maximum depth 12 feet, average depth 6 feet. Sits at edge of wet meadow. Eastern brook and cutthroat trout 8 to 12 inches. Lake stocked with Eastern brook. Camping places on lake, good horse feed available in meadow.
- X-87-57.** 13 acres, elevation 11,200 feet, maximum depth 30 feet, average depth 11 feet. Lake lies in Ottoson Basin near base of Cleveland Peak. Cutthroat, brook trout to 15 inches. Open, rocky, grassy country surrounds lake. Poor camping sites.
- X-88-57.** 3 acres, elevation 11,100 feet, maximum depth 8 feet. Approximately 20 miles from Moon Lake in Ottoson Basin. Good fishing for cutthroat trout to 12½ inches. Stocked.
- X-89-57.** 1½ acres, elevation 11,500 feet, maximum depth 10 feet. Sits south of X-87 and X-88 in Ottoson Basin. Planted with an experimental planting of Eastern brook in 1962.
- X-92-57.** At head of Ottoson Basin some 30 miles from Moon Lake on marked trail. Only marginal fishing for cutthroat trout. 3 acres, elevation 11,400 feet, maximum depth 11 feet, average depth 7 feet. Sits in open, rocky country. Stocked.
- X-93-57.** 4 acres, elevation 11,200 feet, maximum depth 5 feet. Sits in Ottoson Basin northeast of X-88. A small lake which has produced large 14 to 16-inch Eastern brook. Rocky, open, country. Stocked.

